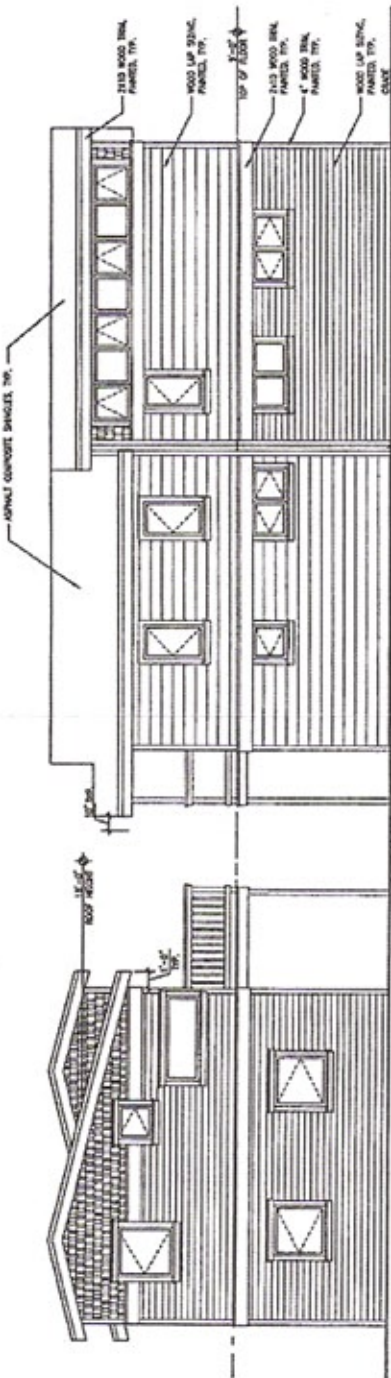


**\*Approved\***

City of Portland - Bureau of Development Services

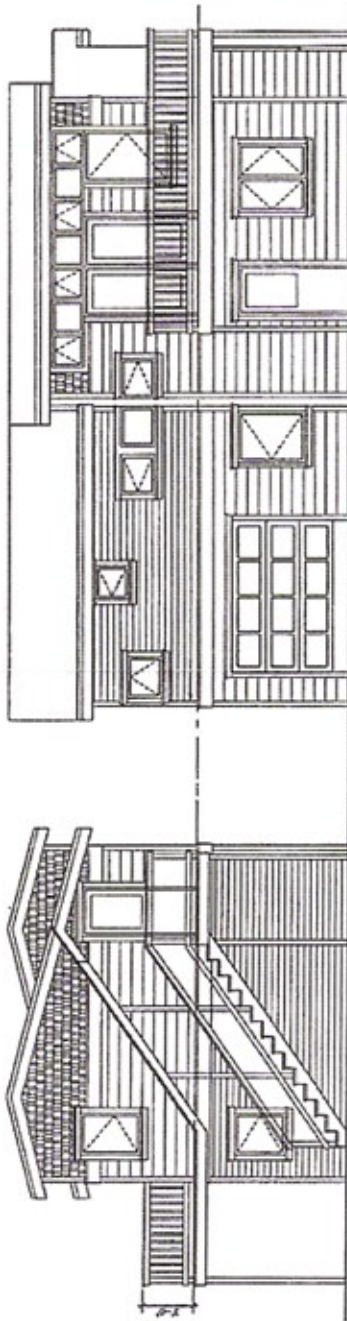
Planner Suzanne Savin Date July 10, 2007

\* This approval applies only to the reviews requested and is subject to all conditions of approval. Additional zoning requirements may apply.



1 SOUTH ELEVATION  
SCALE: 1/8"=1'-0"

2 EAST ELEVATION  
SCALE: 1/8"=1'-0"



3 NORTH ELEVATION  
SCALE: 1/8"=1'-0"

4 WEST ELEVATION  
SCALE: 1/8"=1'-0"

Exhibit C-2 : Revised Elevations  
LU 07-129273 AD