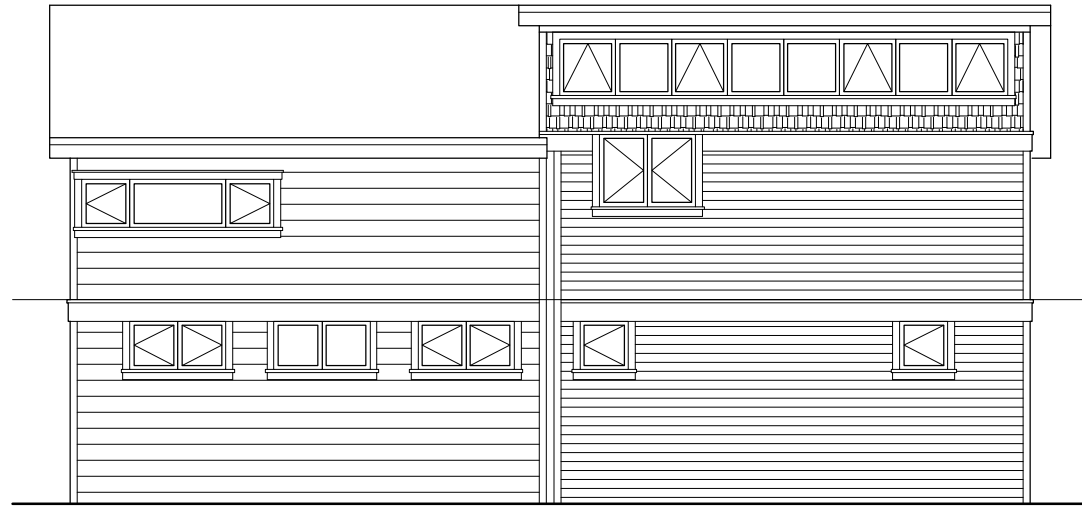
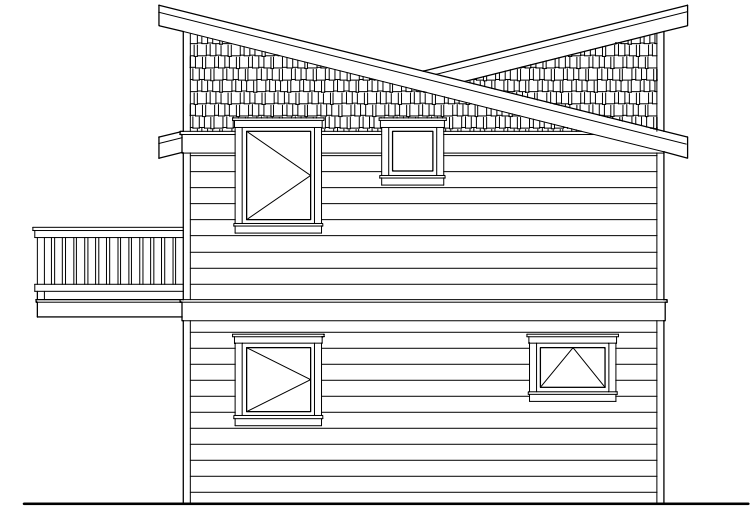


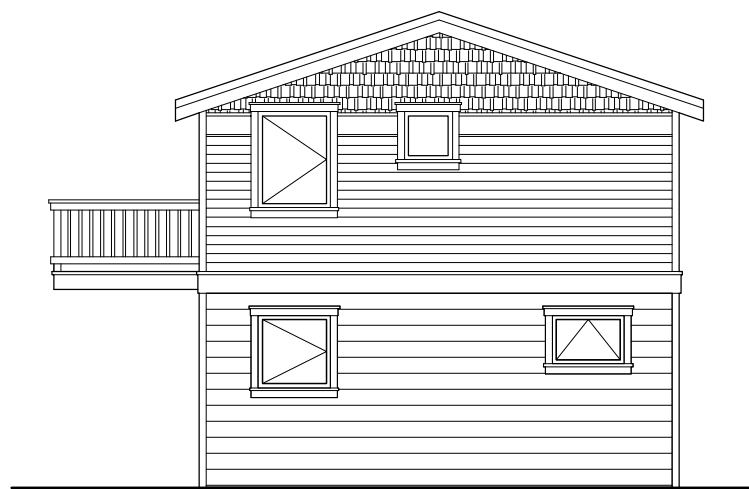
OPT 2 WEST ELEVATION
SCALE: 1/8"=1'-0"



SOUTH ELEVATION
SCALE: 1/8"=1'-0"



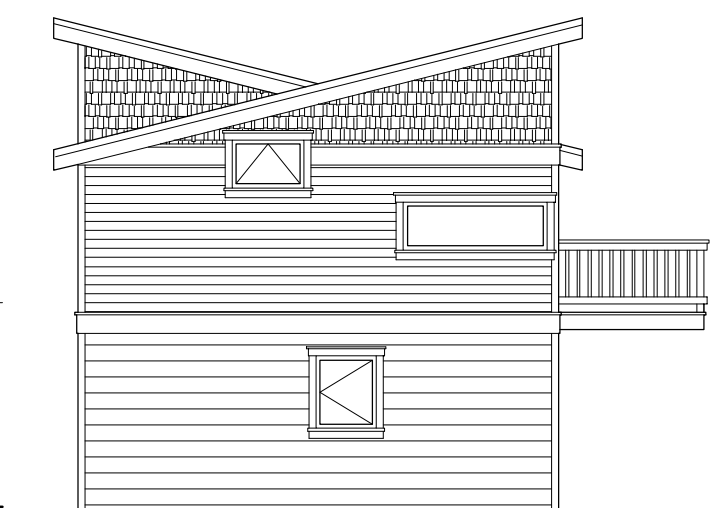
WEST ELEVATION
SCALE: 1/8"=1'-0"



OPT 3 WEST ELEVATION
SCALE: 1/8"=1'-0"



NORTH ELEVATION
SCALE: 1/8"=1'-0"



EAST ELEVATION
SCALE: 1/8"=1'-0"